

Madera Station Relocation Project



San Joaquin
Joint Powers Authority

Project Overview

What is the Madera Station Relocation Project?

The existing Madera San Joaquins Station (Station), which is nearly three miles north of Madera, has extremely low ridership and lacks connecting bus service in the area due to its location. The San Joaquin Joint Powers Authority (SJJPA), in coordination with local leaders, has been planning to relocate the Madera Station to a location near Avenue 12 to better meet regional goals of improving ridership and connectivity.

What is involved in the Project?

To comply with the California Environmental Quality Act (CEQA), it is anticipated that the Project will require an Initial Study/Mitigated Negative Declaration (IS/MND) to identify potential environmental impacts and associated mitigation measures. Once this process is complete, the Project can move forward to permitting, final design and construction. A schedule can be found on the back of this Fact Sheet.

Who is the Lead Agency?

SJJPA is responsible for the management of the San Joaquins rail service and is the CEQA lead agency for this effort. To help ensure a successful process, the SJJPA is working closely with the Madera County Transportation Commission, Madera County, City of Madera, California State Transportation Agency (CalSTA), and the California High-Speed Rail Authority (CHSRA).



Figure 1. Current San Joaquins Route Map

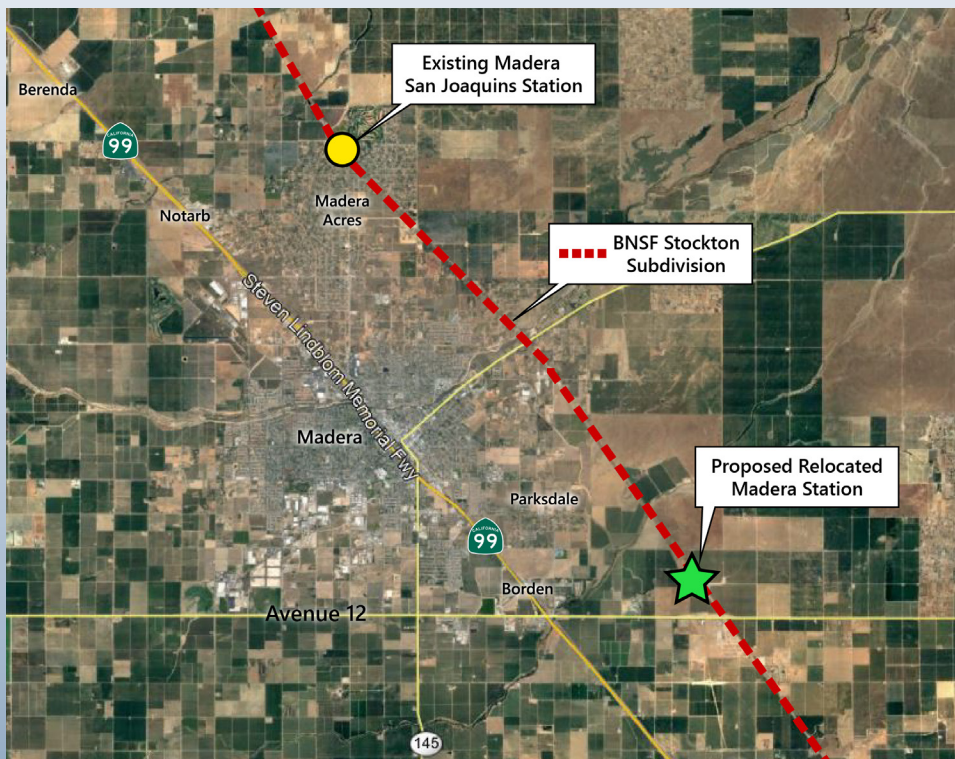


Figure 2. Current and Proposed Relocated Madera Station

New Station Location

- Approximately 1 mile north of Avenue 12 along the BNSF railroad right-of-way and high-speed rail (HSR) corridor, and 2 miles from the Madera Community College Center
- Primarily on publicly-owned land within the Madera State Center Community College Specific Plan, which designates future development in the area and provides opportunity for transit-oriented development
- Close to approved future growth areas of Madera County

Benefits of New Avenue 12 Station Location



Avenue 12 is a primary transit route for Madera County



Excellent access to State Route 99 with a recently updated interchange at Avenue 12 while continuing to provide access to central Madera with similar travel times



Improves access times for riders from neighborhoods in southern Madera County



Accommodates anticipated growth in southeast Madera County and north Fresno



Supports transit-oriented development (TOD) as part of the State Center Community College (SCCC) Specific Plan, which will include Madera Community College Center

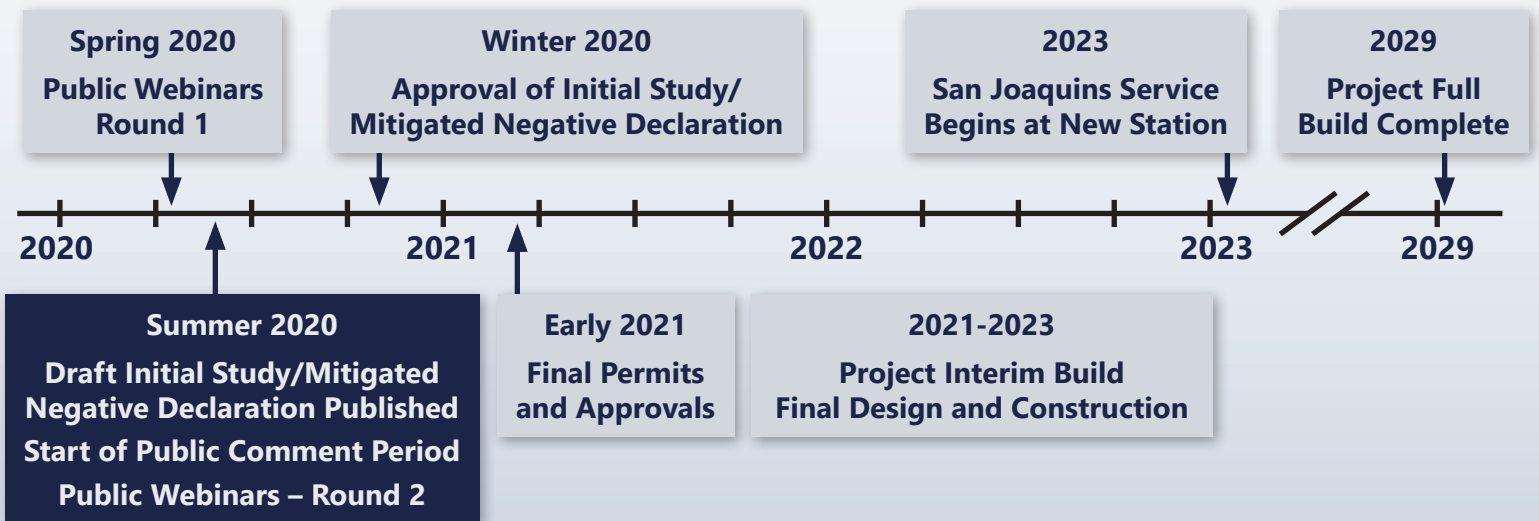


Location near Madera Community College Center will allow easy access for staff, students, and visitors



Will enable future high-speed rail service to access the Madera Station

What is the anticipated timeline for the Madera Station Relocation?



We want to hear from you!

For more information on the project, to view past presentation materials, to provide input, and to sign up for our email list, visit:

www.sjjpa.com/madera-station-relocation-project

Stay Connected

Join SJJPA on our social media platforms for the most up to date information.



facebook.com/AmtrakSanJoaquins



[@SanJoaquins](https://twitter.com/SanJoaquins)

Contact:

Dan Leavitt

Manager of Regional Initiatives

San Joaquin Joint Powers Authority

dan@sjjpa.com

(209) 944-6266



San Joaquin
Joint Powers Authority